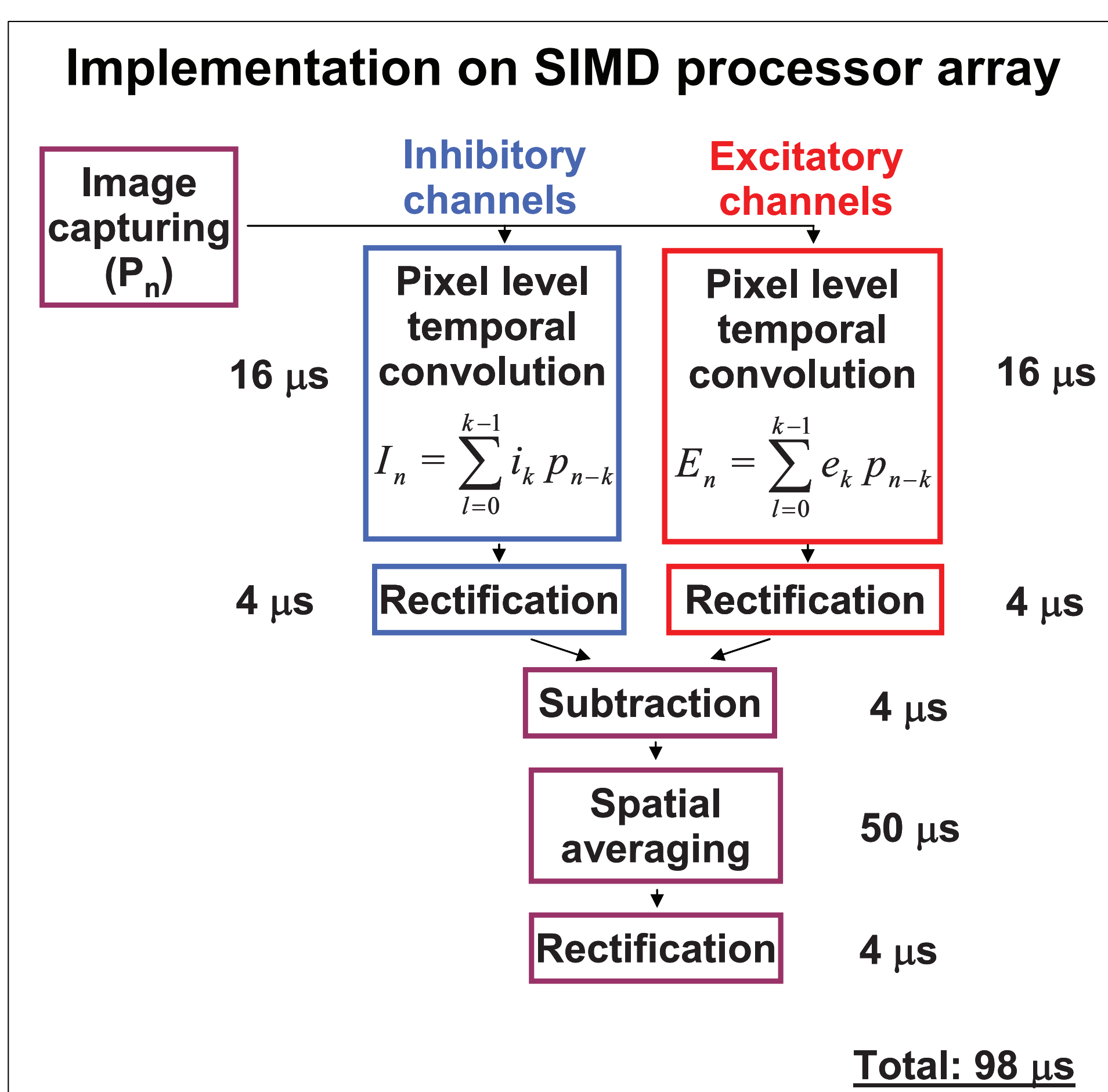
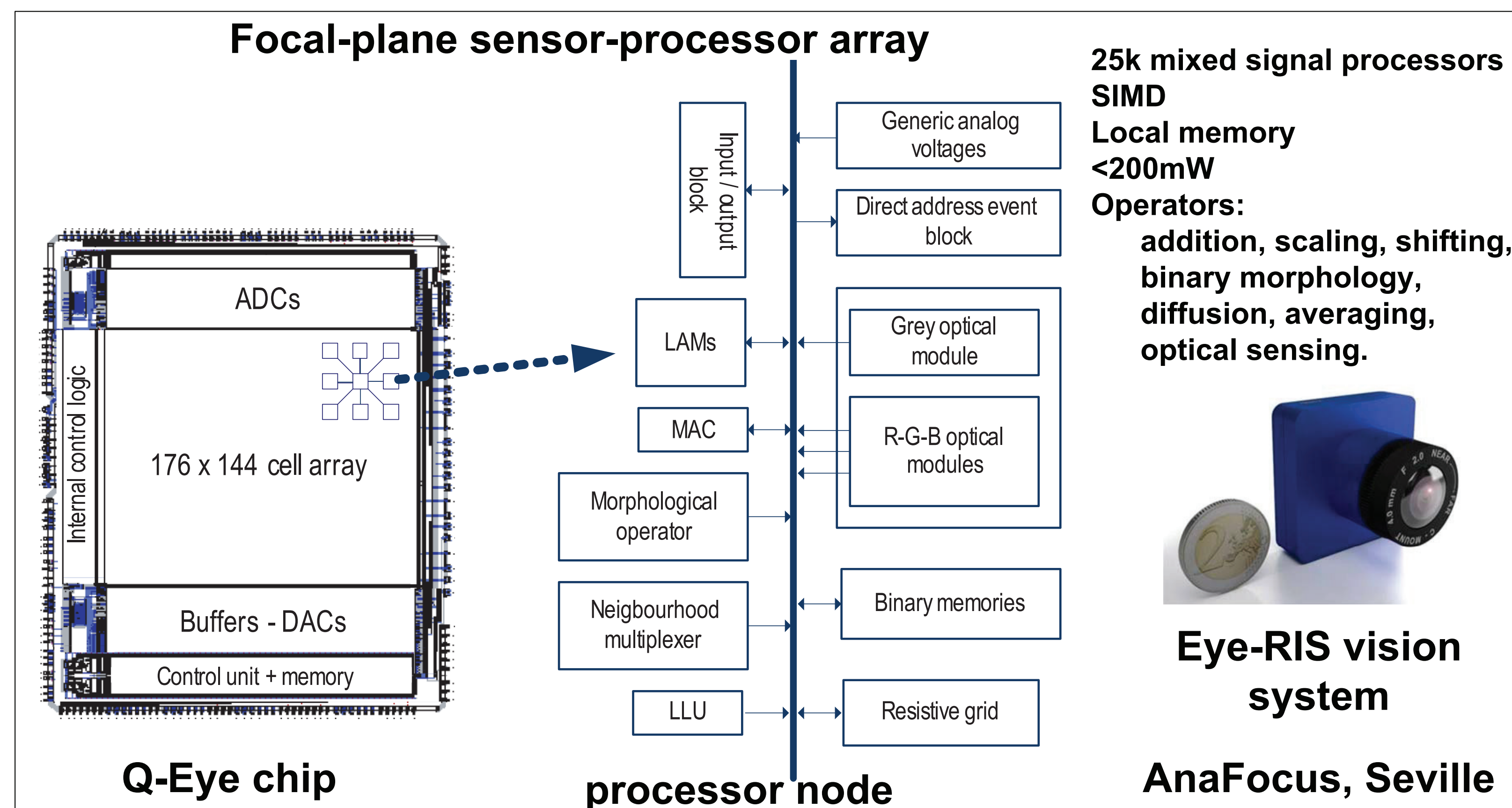
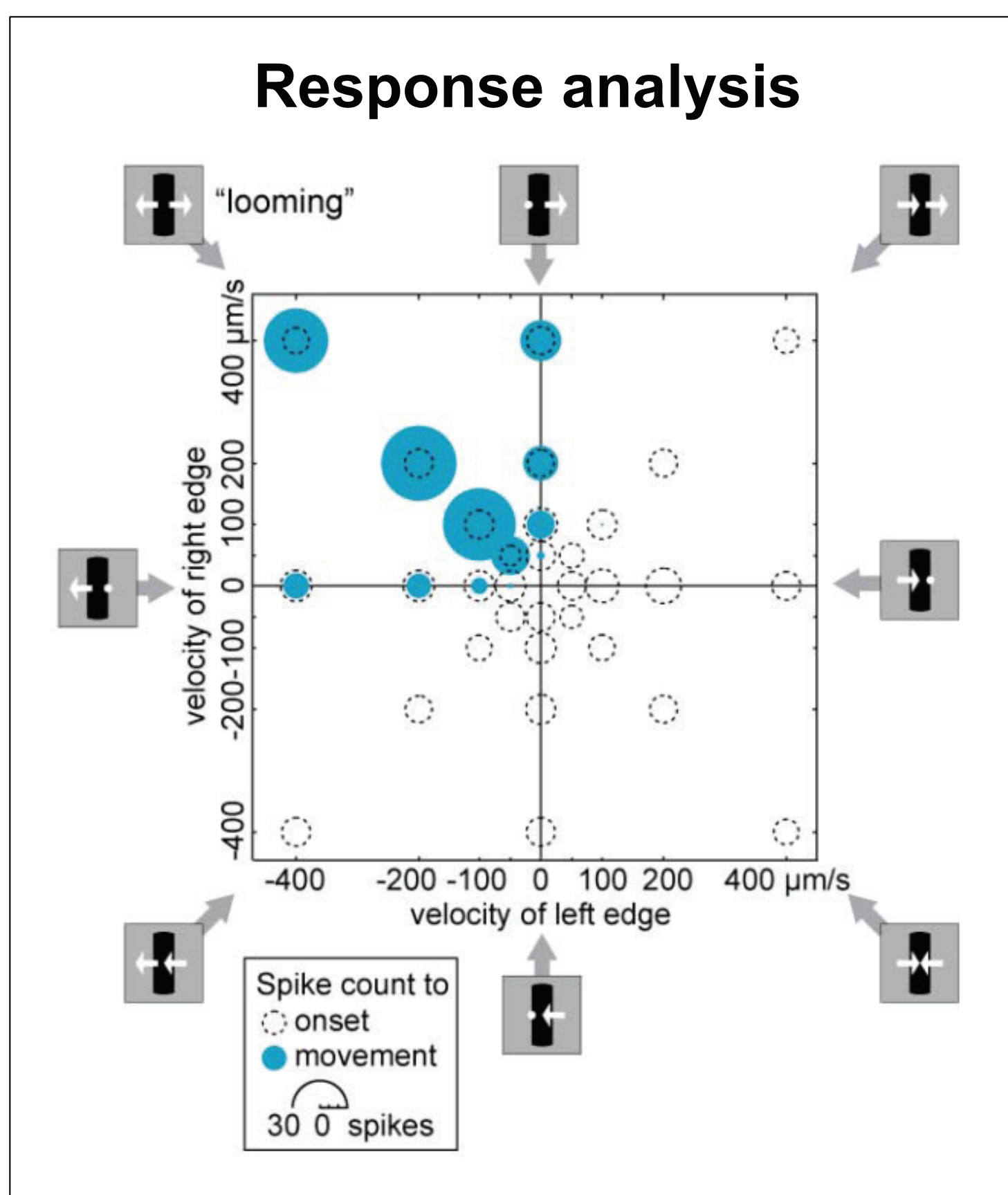
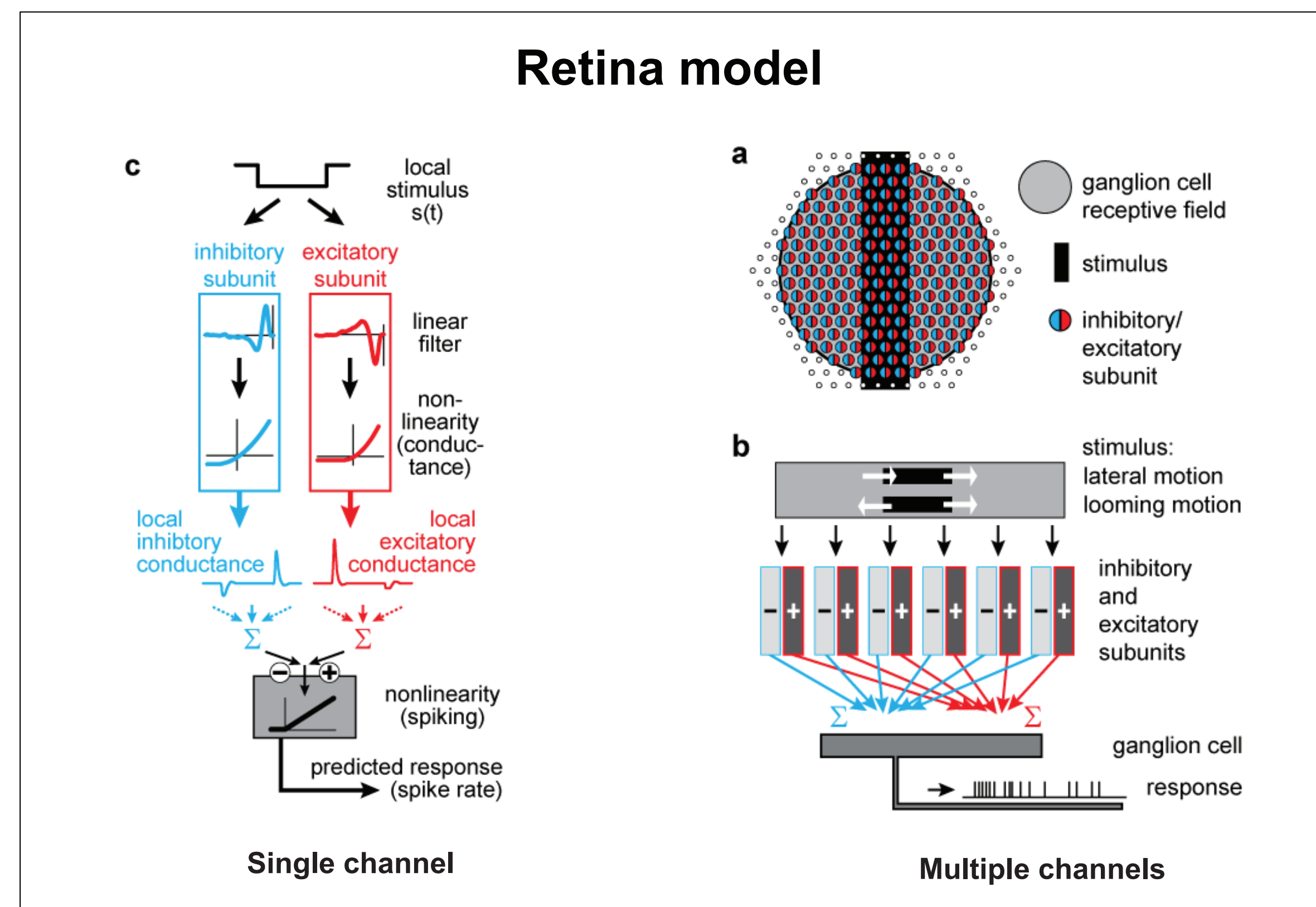
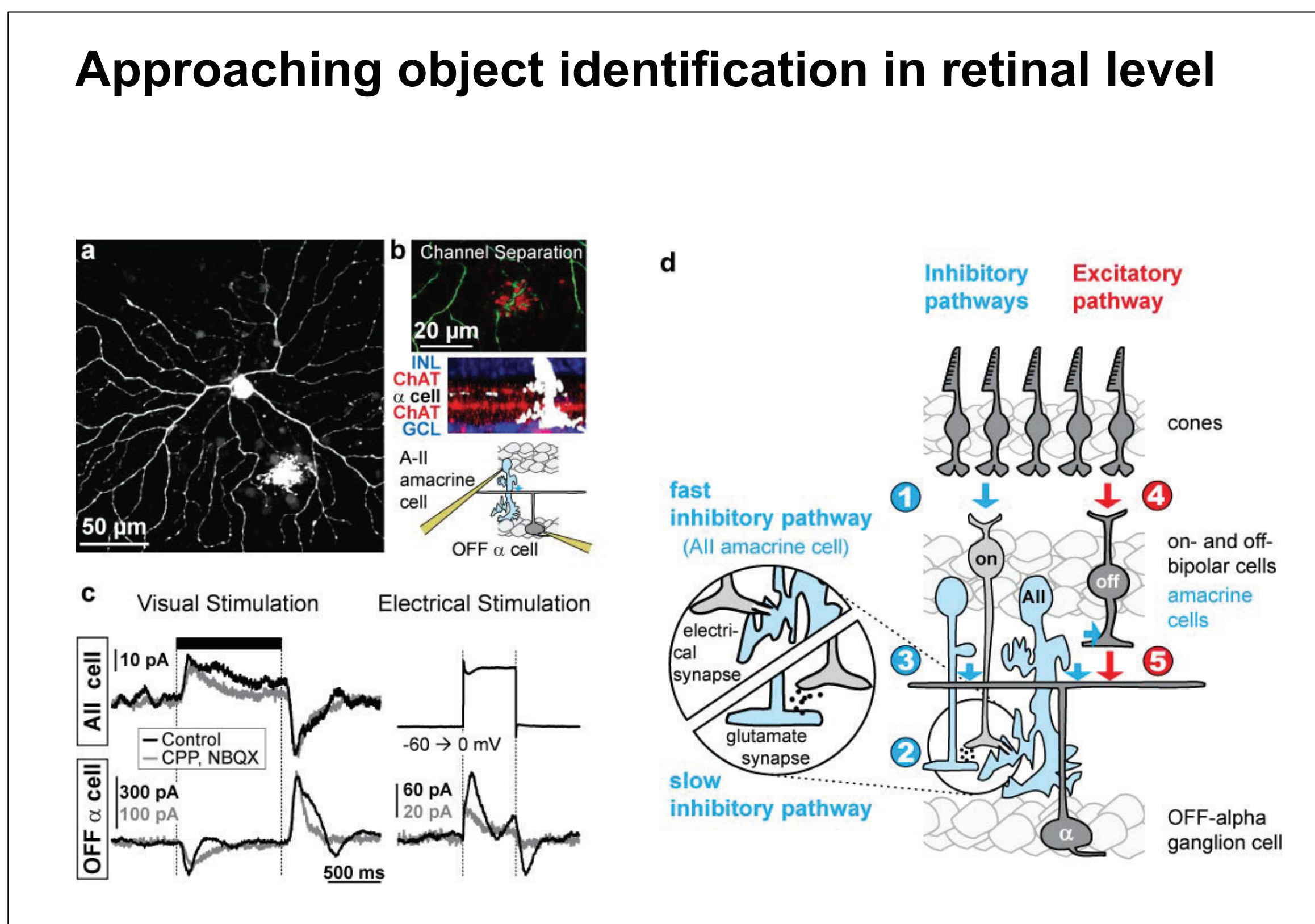


Retina modell mapped to the 25k processor Q-Eye chip

Ákos Zarándy*, Tamás Fülöp**

*Cellular Sensory and Wave Computing Laboratory
Computer and Automation Research Institute,
Hungarian Academy of Sciences, Budapest
E-mail: zarandy@sztaki.hu

**Pázmány Péter Catholic University,
Faculty of Information Technology,
Doctoral School, Budapest
E-mail: fulta@digitus.itk.ppke.hu



Additional details: T. A Münch, R. Azeredo da Silveira, S. Siegert, T. J. Viney, G. B Awatramani & B. Roska "Approach sensitivity in the retina processed by a multifunctional neural circuit", Nature Neuroscience, Published online: 06 September 2009

